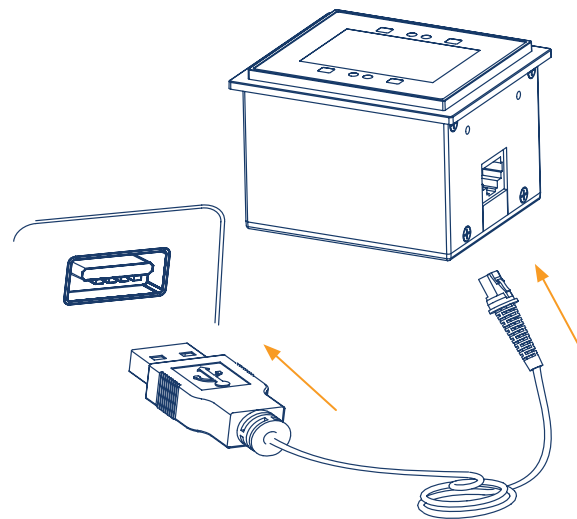
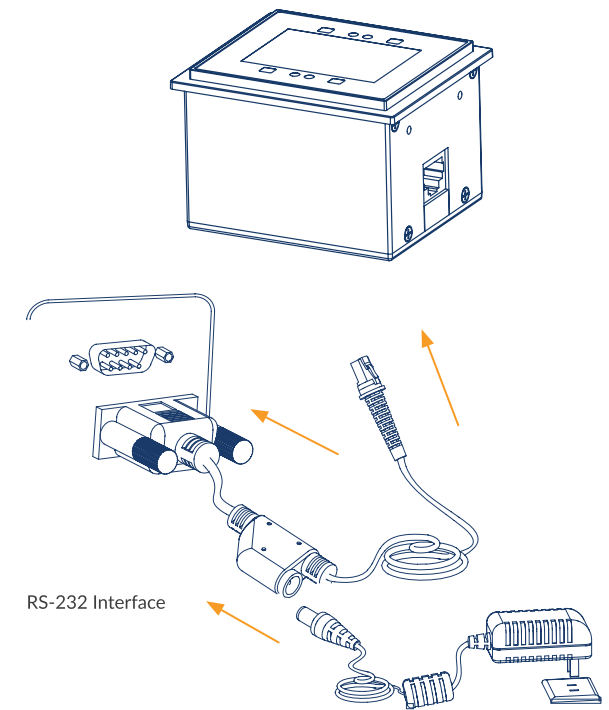


1



USB Interface

2



RS-232 Interface

3

Note: The host refers to a PC, POS, or other terminal equipped with USB or RS-232 interface.

### Scanning instructions

**Sense scan mode (default):**

- Step 1:** Connect the scanner to a host with the cable. Then the scanner will be powered on with a beep.
- Step 2:** Place the mobile phone screen or paper close to the scan window and present the barcode to the center of the window, adjusting the distance between them within the range of 1cm - 5cm.
- Step 3:** For a successful read, the scanner will beep. After sending the data to the host, it will enter standby mode.

### Troubleshooting

**When the scanner is not working, please:**

- 1 Ensure that all cable connections are secure and that only the supplied cables are used.
- 2 Ensure that the screen backlight is on when reading digital barcodes off a mobile phone and that the barcode is not defaced when reading it on paper. Wrinkled, soiled, or torn barcodes might be unreadable.
- 3 Ensure that the barcode type is enabled.



Visit our website  
[newland-id.com](http://newland-id.com)

4



FM3056  
Grouper

